

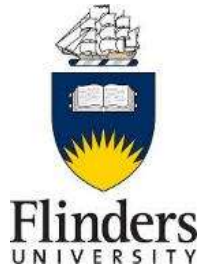
# Socio-ecological assessment of the ecosystems, industries and communities of Spencer Gulf:

## *Gulfview*

Tim Ward  
April 2019



The Goyder Institute for Water Research is a partnership between the South Australian Government through the Department for Environment and Water and the following organisations:



A socio-ecological assessment of the ecosystems, industries and communities of Spencer Gulf was co-funded by:



The primary organisations that undertook the socio-ecological assessment of the ecosystems, industries and communities of Spencer Gulf were:



*Demand Driven Research – Research Informing Policy*

## Report

Bailleul, F. and Ward, T.M. (2019) Socio-ecological assessment of the ecosystems, industries and communities of Spencer Gulf: 'Gulfview' interactive platform. Goyder Institute for Water Research Technical Report Series No. 19/02, Adelaide, South Australia.

<http://www.goyderinstitute.org/publications/technical-reports/>

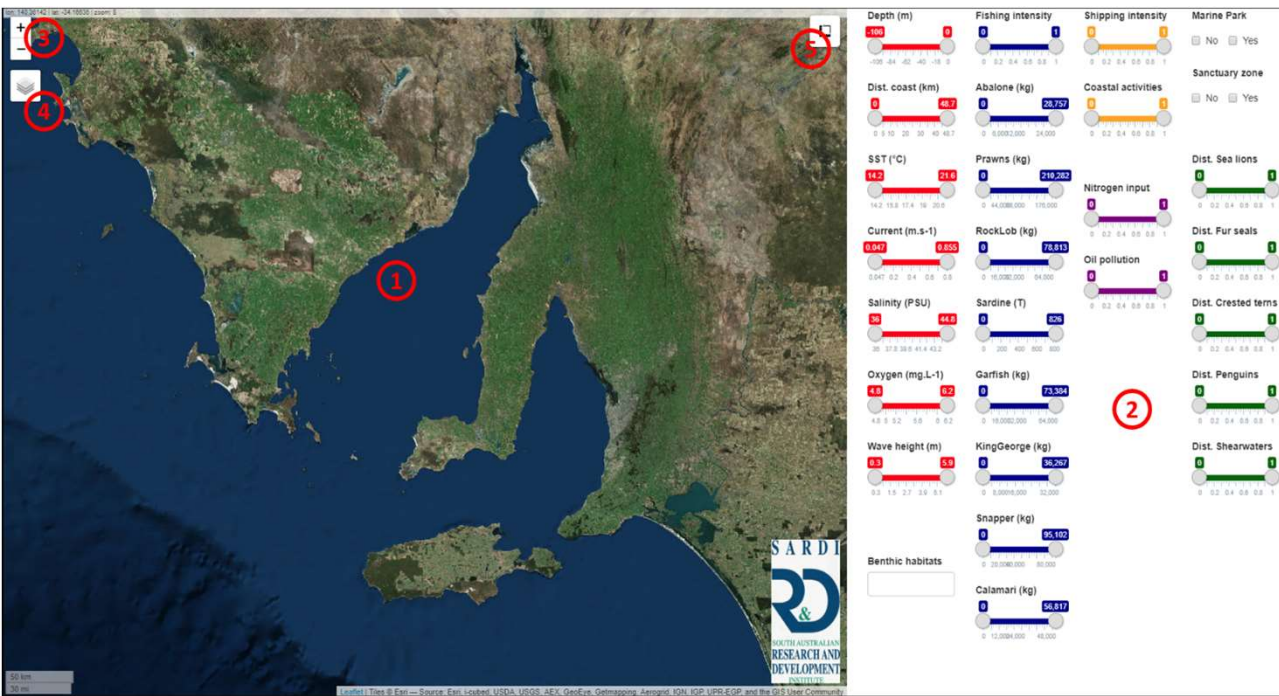
## Task:

Establish interactive maps of environmental characteristics, ecological assets, human activities, management arrangements and socio-economic values of Spencer Gulf

## Outcome:

Interactive software platform called *Gulfview*, which allows stakeholders to access spatially-explicit information about the environmental characteristics, ecological assets, human activities, management arrangements and socio-economic values of Spencer Gulf

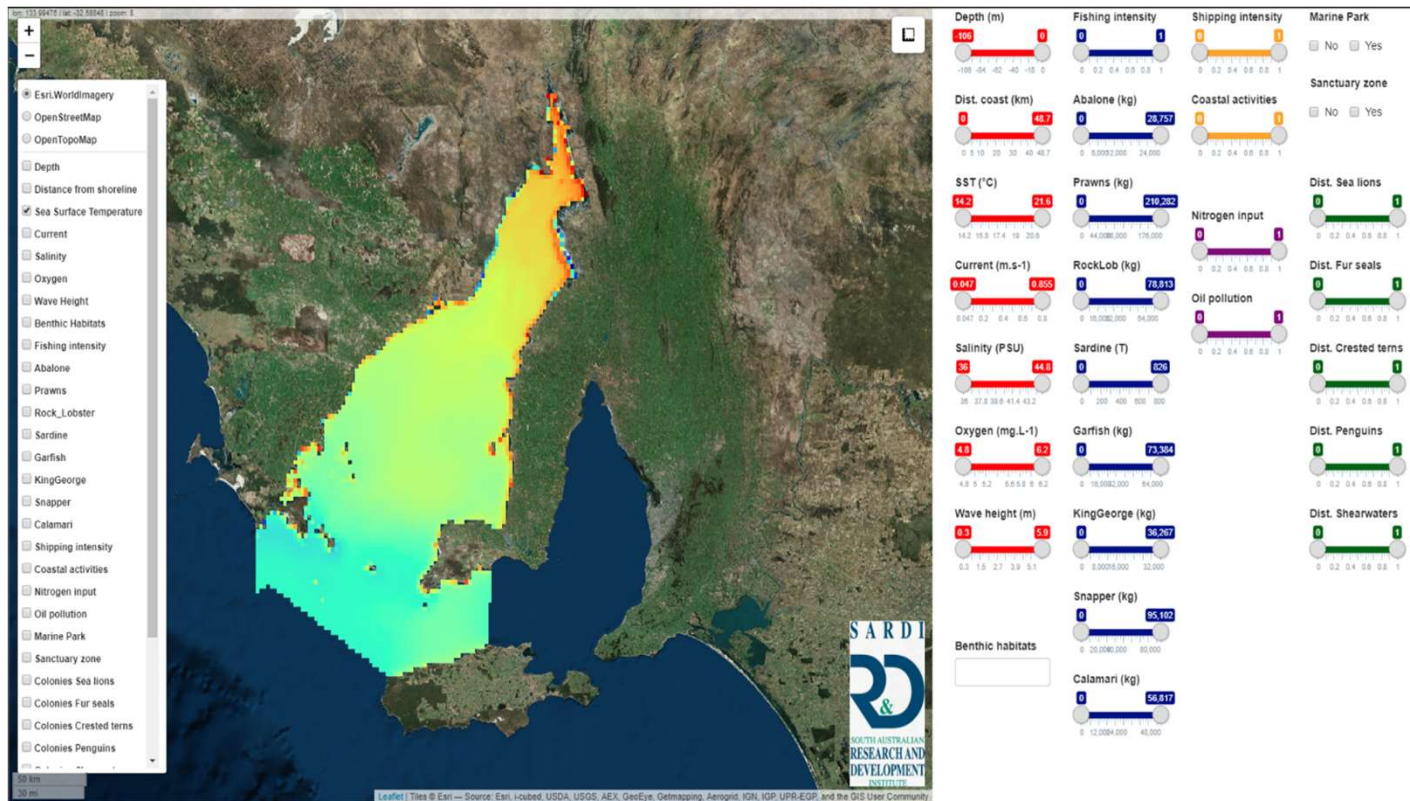
# Gulfview



1. A map focused on the Spencer Gulf.
2. A list of variables in the form of color-coded sliders.
3. A zoom in/out button.
4. A layer-control button.
5. A button to measure distances and areas

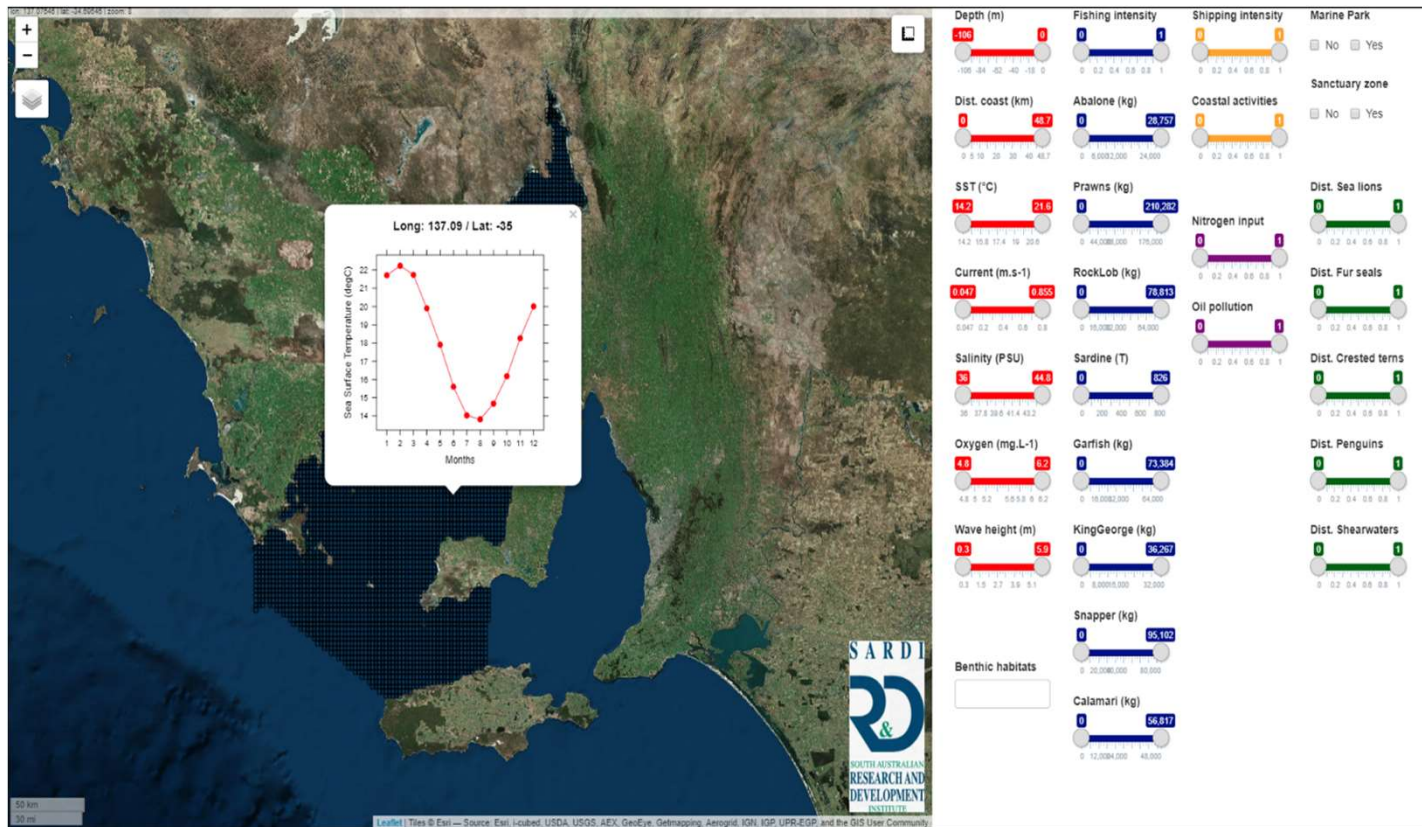


# Spatial data layers



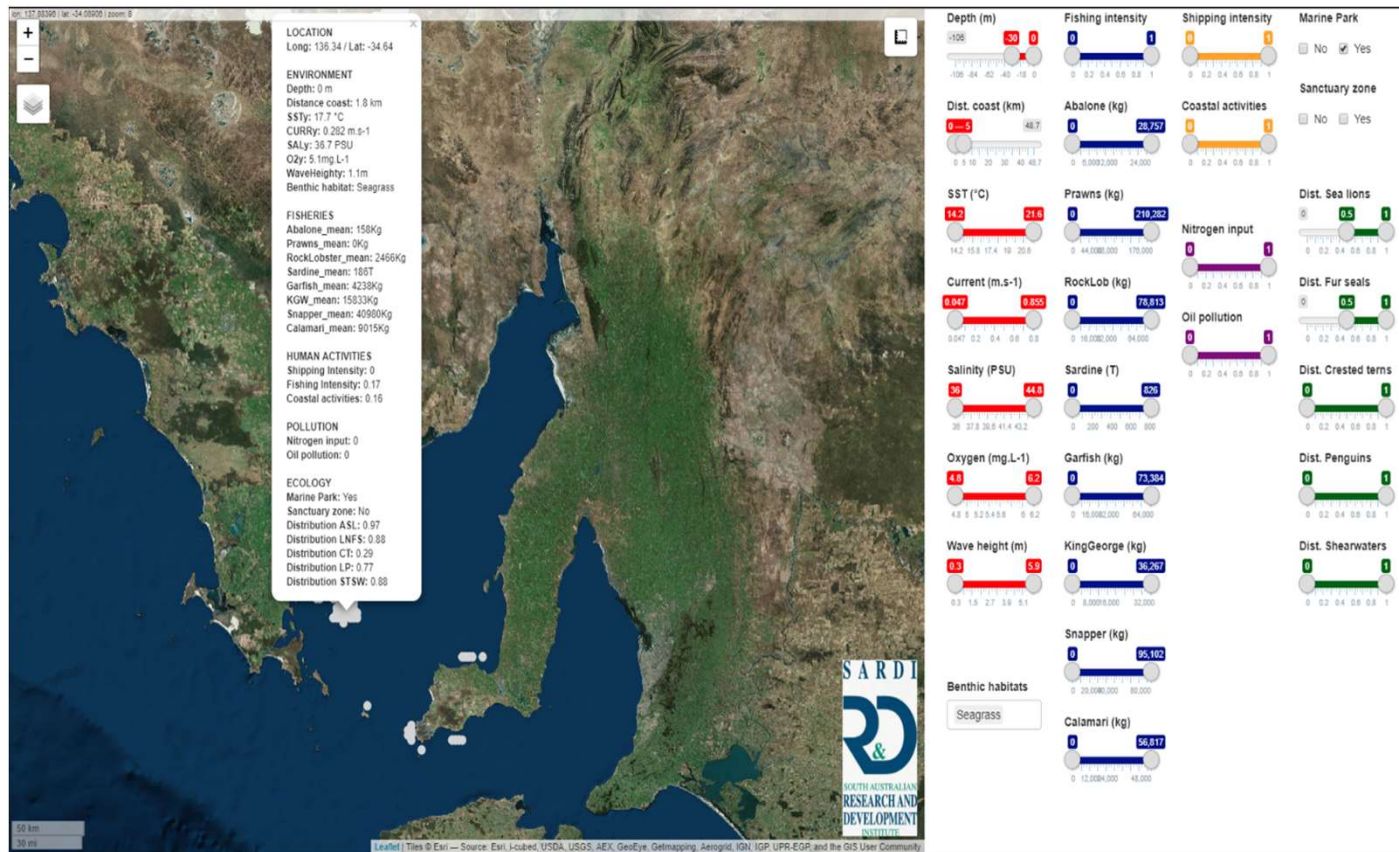
Example:  
Sea Surface Temperature

# Seasonality in key variables

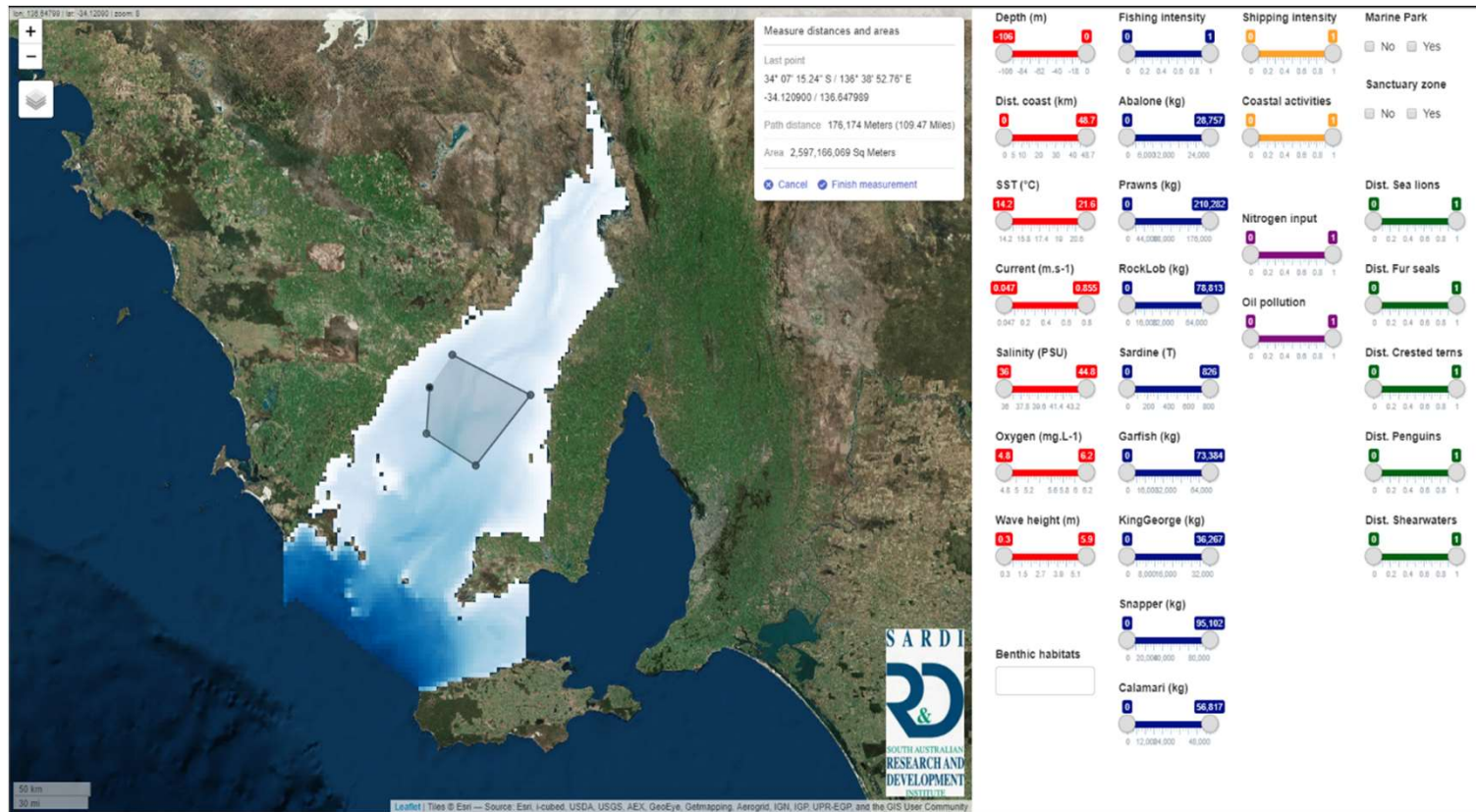




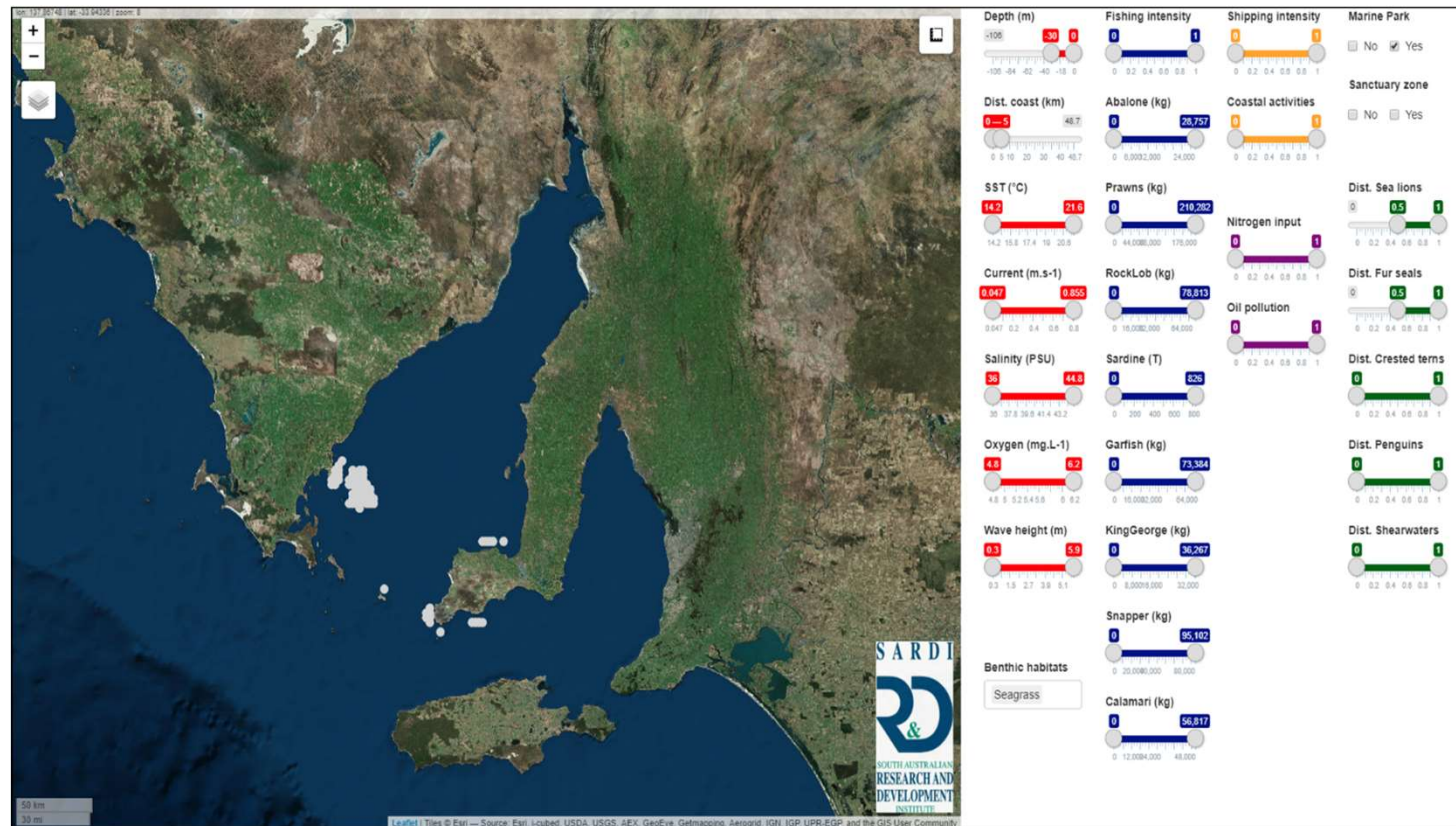
# Integrate information for location



# Measure distances and areas



# Identify areas of overlap of key features





# Recommendations

- *Gulfview* is a marine-focused tool with similarities to *AgInsight South Australia*.
- *Gulfview* has already been used by the finfish and algal aquaculture sectors to help identify locations suitable for establishing new production sites in Spencer Gulf.
- The capabilities of *Gulfview* need to be readily available to other marine stakeholders.
- Could be done by establishing *Oceanview South Australia*, which would cover all State and Commonwealth waters off SA.
- *Oceanview South Australia* would complement *AgInsight South Australia*.